



Virginia

FORWARD VIRGINIA BLUEPRINT



Case Measures



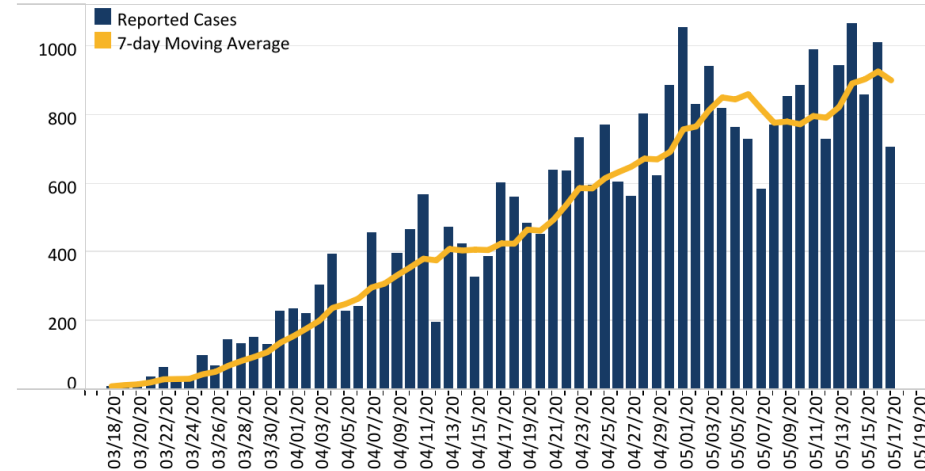
Dashboard Updated: 5/17/2020, Data entered by 5:00 PM the prior day.

[Click to Select Measures for Cases or Deaths](#)

- ☒ Cases
☐ Deaths

Total Cases by Date Reported

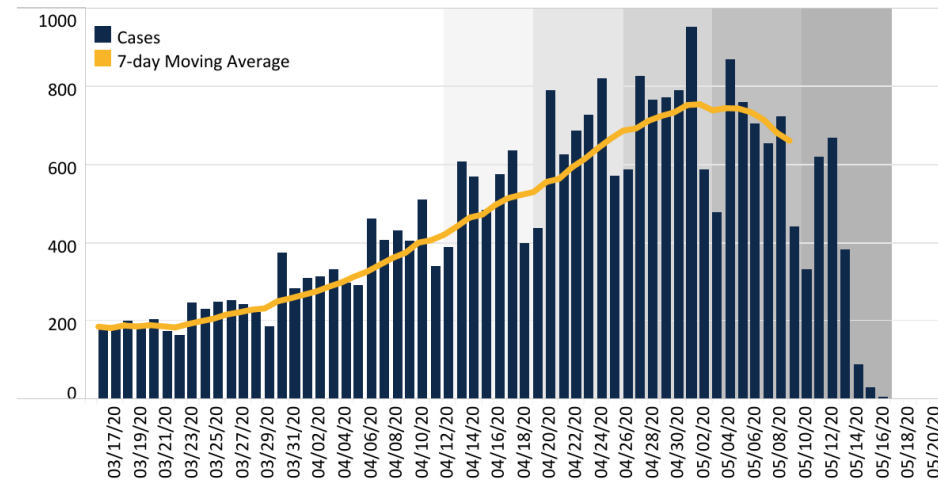
Number of new cases VDH reported by day.



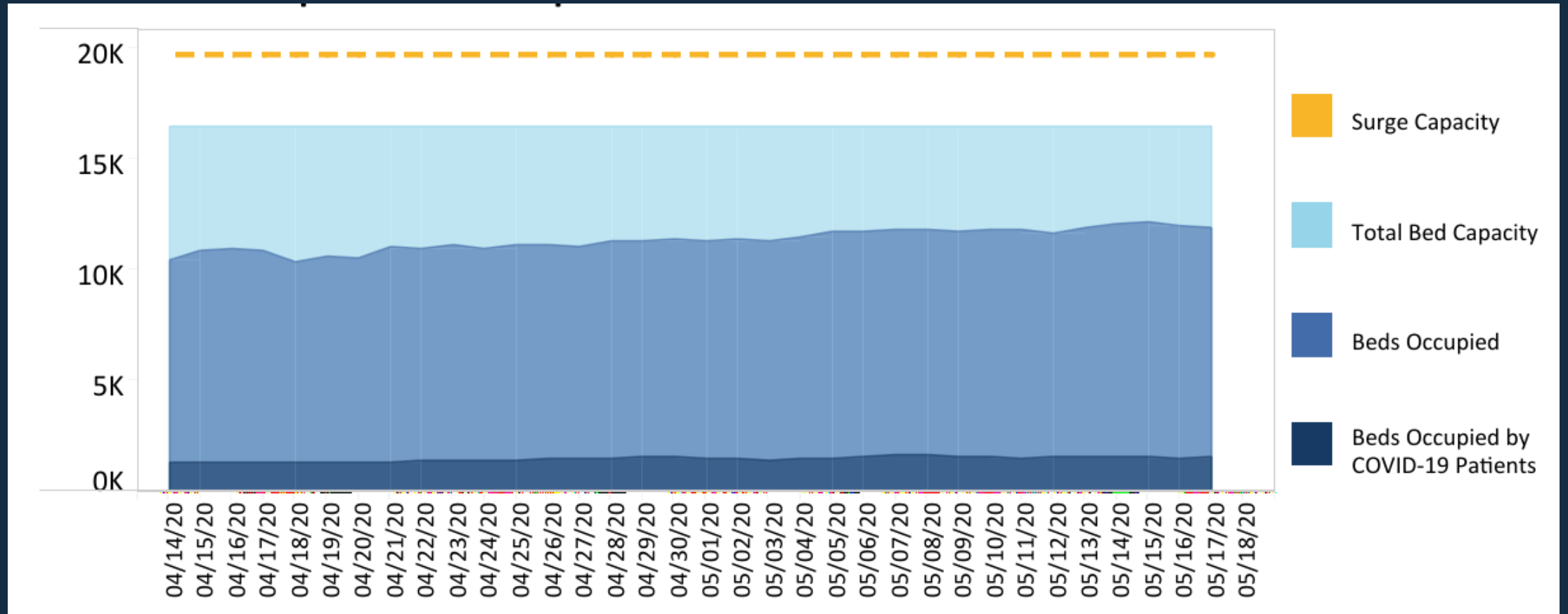
Confirmed Cases by Date of Symptom Onset

Number of cases by the day closest to when symptoms began.

Illness may not have been reported yet.

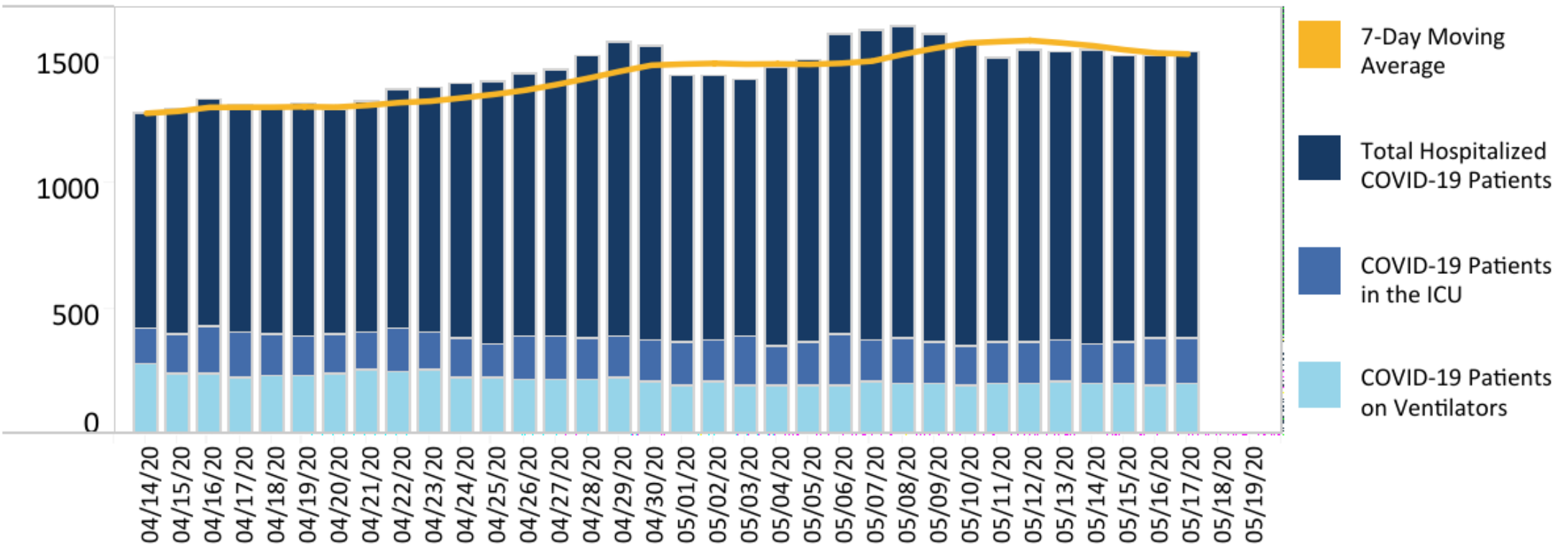


Hospital Beds Occupied



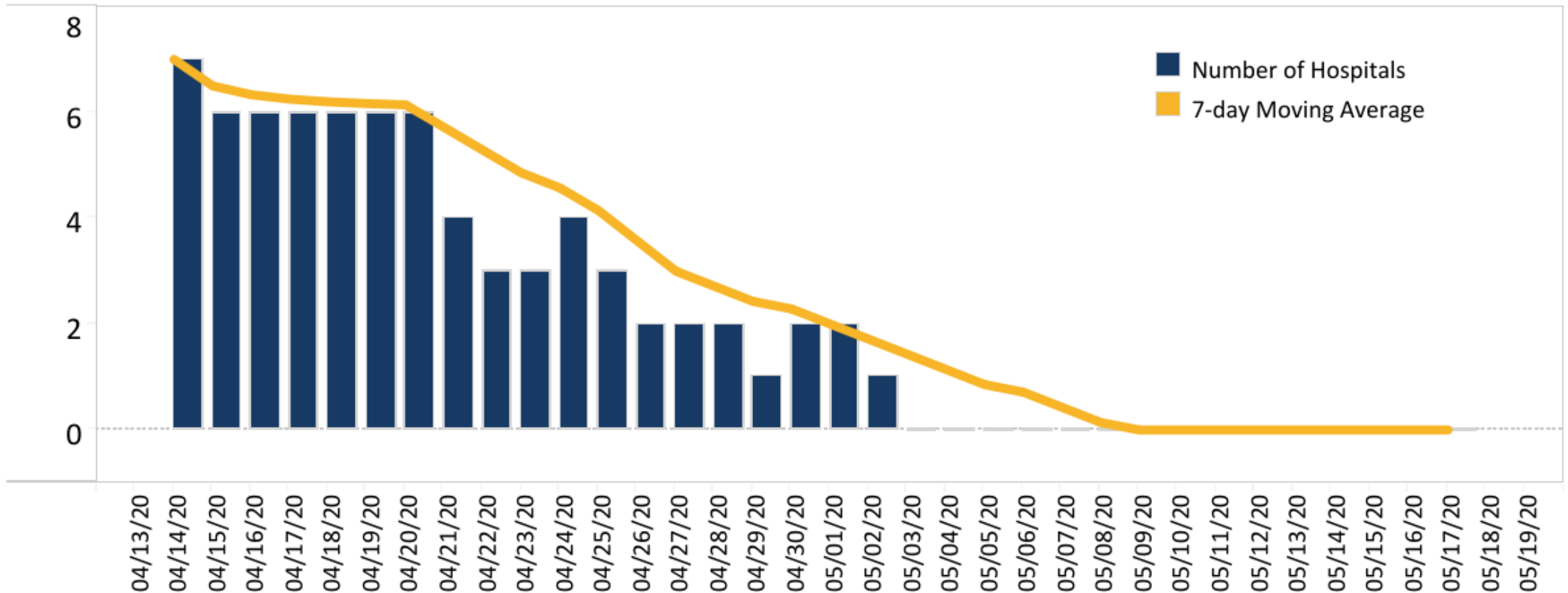
Patients Hospitalized with Positive or Pending Tests

Number of Patients Hospitalized with a Positive or Pending COVID-19 Test



Hospitals Reporting Difficulty Acquiring PPE

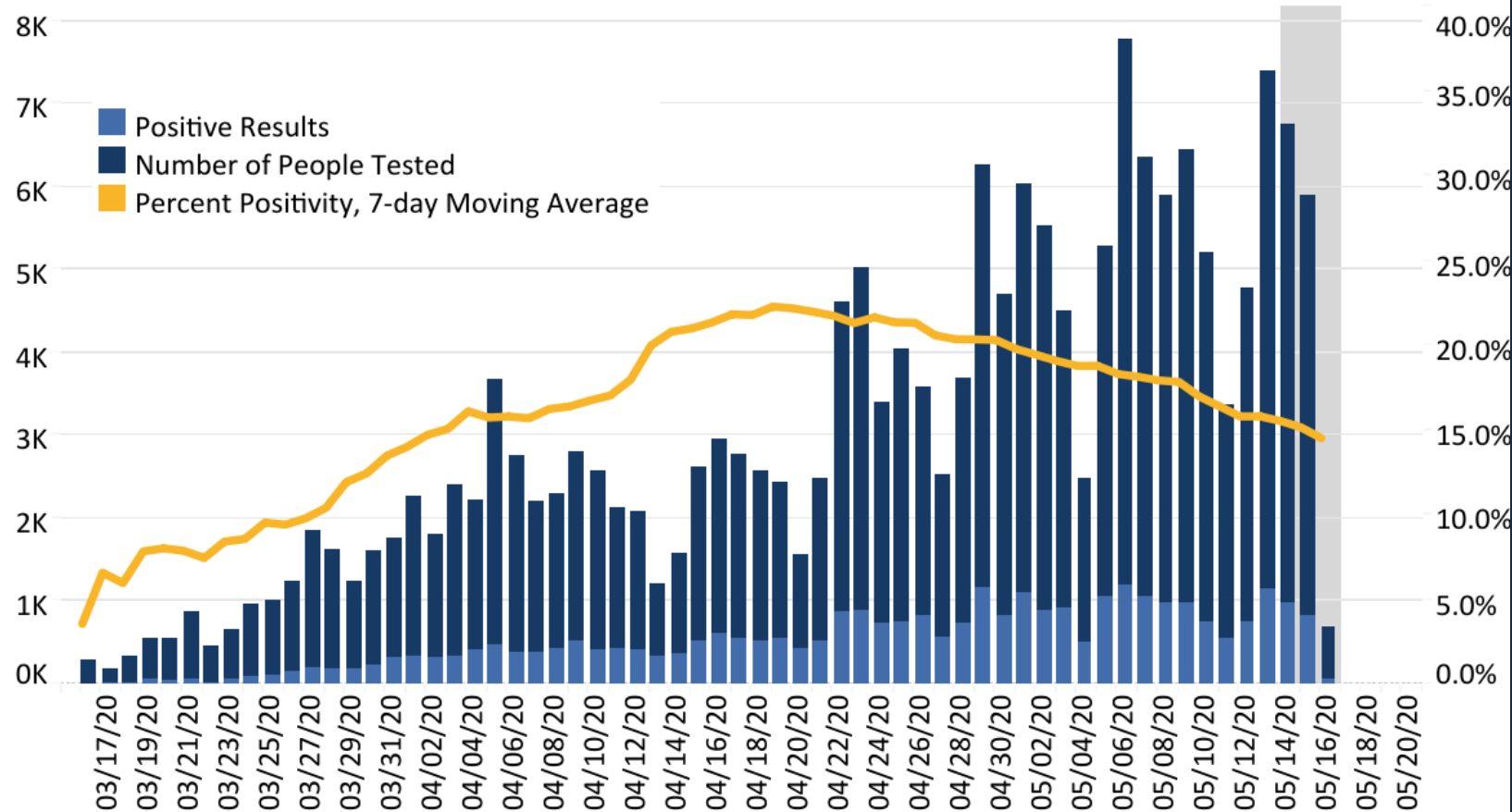
Number of Hospitals Reporting Difficulty Acquiring PPE in the Next 72 Hours



Testing Measures

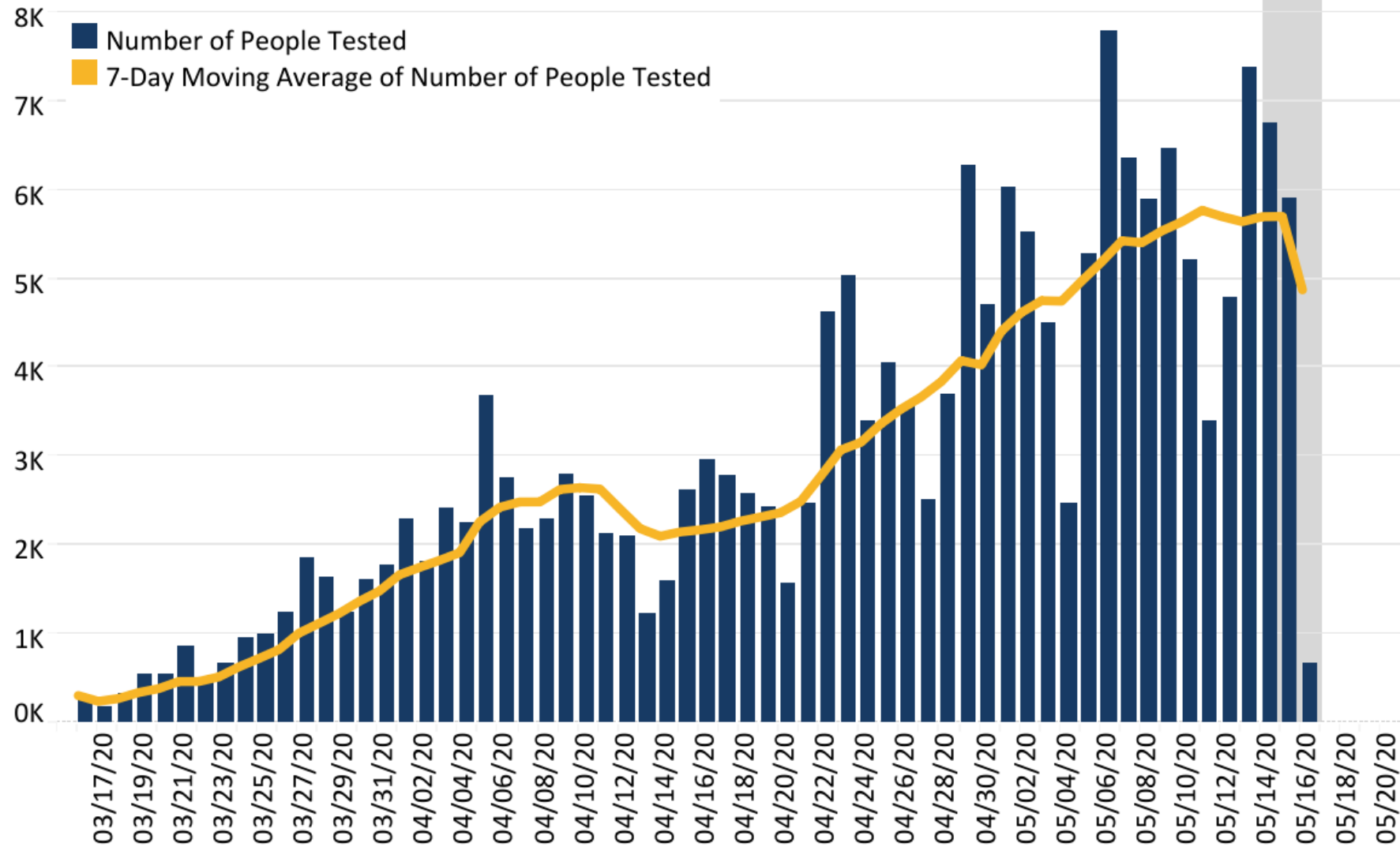
Dashboard Updated: 5/17/2020, Data entered by 5:00 PM the prior day.

Number of People Tested, Number of Positive Tests, and Percent Positivity by Lab Report Date, PCR Only*



Number of People Tested per Lab Report Date, PCR Only

Number of People Tested per Lab Report Date, PCR Only



* "PCR" refers to "Reverse transcription polymerase chain reaction laboratory testing"

Phase I looks like this:

- Safer at home—especially if you are vulnerable
- No social gatherings of more than 10 individuals
- Continued social distancing
- Continued teleworking
- Face coverings recommended in public
- Revised business limitations



Phase I: Guidelines for All Businesses

1. Physical distancing

- Provide 6 feet of distance between co-workers.
- Where 6 feet is not possible, employers must provide face coverings to employees

2. Cleaning and disinfection

- Disinfect all high contact surfaces at least every 2 hours.
- Provide a place for employees and customers to wash hands with soap and water, or provide hand sanitizer

3. Workplace safety

- Pre-shift screening of employees
- Flexible sick leave policies to ensure that sick employees stay home
- Protections for vulnerable employees

Forward Virginia: Phase One

Here is what changes in Phase One with the Safer at Home order:

	PHASE ZERO	PHASE ONE
Non-essential retail	Open with 10-person limit	Open with 50 percent capacity
Restaurant and beverage services	Takeout and delivery	Takeout and delivery; Outdoor seating at 50 percent capacity
Entertainment and amusement	Closed	Closed
Fitness and exercise	Closed	Closed (limited to outdoor fitness)
Beaches	Exercise and fishing only	Exercise and fishing only



Forward Virginia: Phase One

Here is what changes in Phase One with the Safer at Home order:

	PHASE ZERO	PHASE ONE
Places of worship	Drive-in services; 10-person limit	Drive-in services 50 percent indoor capacity
Personal grooming	Closed	Appointment only Strict social distancing Face coverings required
Private campgrounds	Closed	Open
State parks	Open to day use only	Day use; Overnight in phases
Child Care	Open for working families	Open for working families
overnight summer camps	Closed	Closed



Forward Virginia: Phase One

Here is what changes in Phase One with the Safer at Home order:

	PHASE ZERO	PHASE ONE
Gatherings	10-person limit	10-person limit
Teleworking	Strongly encouraged	Strongly encouraged
Face coverings	Strongly encouraged	Strongly encouraged



Phase II looks like this:

- Stay at home for vulnerable populations
- No social gatherings of more than 50 individuals
- Continued social distancing
- Continued teleworking
- Face coverings recommended in public
- Further easing business limitations



Phase III looks like this

- Safer at home for vulnerable populations
- Continued social distancing
- Face coverings recommended in public
- Further easing business limitations

Considerations for ALL Phases: Individuals

- Continue to practice good hygiene and implement personal protective measures (e.g., handwashing, cough etiquette, and face coverings)
- Social distancing (e.g., maintaining physical distance between persons)
- Environmental surface cleaning at home and in community settings, such as schools or workplaces
- People who feel sick should stay home

Considerations for Higher Education

- 1. A plan for repopulation of the campus
- 2. A plan for monitoring health conditions to detect infection
- 3. A plan for containment to prevent spread of the disease when detected
 - Testing
 - Contact Tracing
 - Isolation/Quarantine
- 4. A plan for shutdown if it becomes necessary



Considerations for Higher Ed

- Mental Health
- Case Management/Health Care Capacity
- Community Mitigation Strategies will Remain Important
 - Class size
 - Occupancy
 - Physical Distancing
 - Social Gatherings
 - Housing considerations
 - Communal spaces
 - Face Coverings
 - Education/Communication on Prevention and Control



QUESTIONS?

